

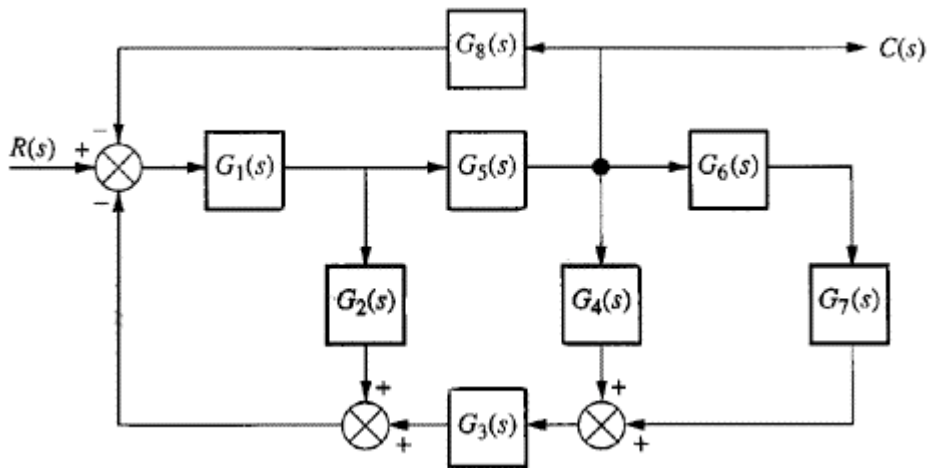
ECE311S Dynamic Systems and Control

Problem Set 5

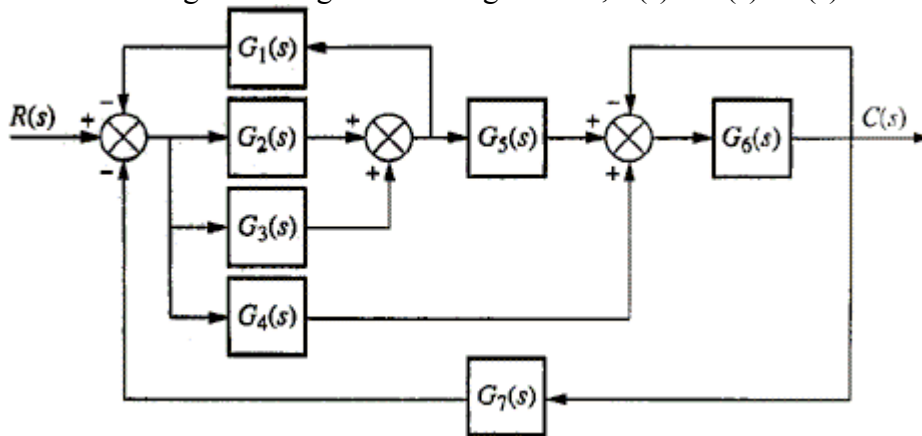
Problems:

Block Diagrams

1. Reduce the following block diagram to a single block, $T(s) = C(s) / R(s)$.

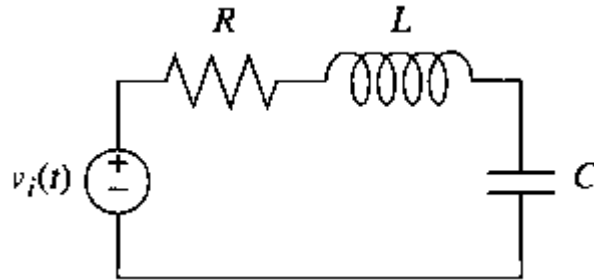


2. Reduce the following block diagram to a single block, $T(s) = C(s) / R(s)$.



Time Response

3. Find the transfer function of a second-order system that yields a 12.3% overshoot and a settling time of 1 second.
4. Given the circuit:



where $C = 10 \mu\text{F}$, find R and L to yield 15% overshoot with a settling time of 2 ms for the capacitor voltage. The input, $v(t)$ is a unit step.